

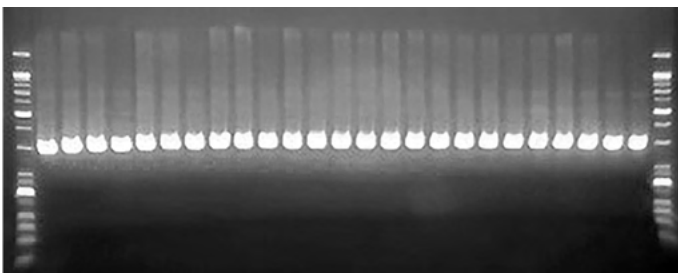
Small Type Thermocycler with High Performance

DuxCycler

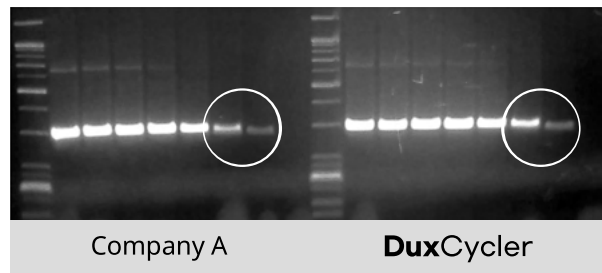


Examples of amplification results

The images below were taken with **DuxGeldoc**.



[**DuxCycler** 25 Wells Validation Test]



Lane 1 1X10⁰ copy/μl
Lane 2 1X10⁰ copy/μl
Lane 3 1X10¹ copy/μl
Lane 4 1X10² copy/μl
Lane 5 1X10³ copy/μl
Lane 6 1X10⁴ copy/μl
Lane 7 1X10⁵ copy/μl
Lane 8 Negative control

Company A

DuxCycler

[Comparative Experiment : **DuxCycler** & Company A]

Characteristics



- 1 **Compact and light, saving space.**
Available as a personal amplification device with a compact size of 15cm x 15cm and a light weight of 1.5kg.
- 2 **Up to 8 DuxCycler connect to 1 operating system.**
A single PC (window) can connect to and operate up to 8 devices simultaneously, each running a different protocol
- 3 **Simple operation(S/W)**
Intuitive GUI for easy operation.
- 4 **Bluetooth Connection with Mobile Devices(optional)**
Compatible with Android mobile devices for connection and operation.

Specification

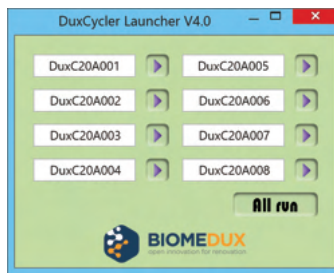
Physical Specification

Dimension (W x D x H)	150 x 150 x 150 mm
Weight	2.5 Kg
Chamber well / tube	25 wells / 0.2mL
Input volt / power consumption	110~220V / 120W

Operation Specification

Heating method	Peltier
Cooling method	Peltier / Air cooling
Operation temperature of Chamber well	4°C~100°C
Temperature accuracy / uniformity	± 0.2°C / ± 0.2°C
Over shoot	< 0.5°C
Ramp rate	2.5°C/sec (heating) 1.5°C/sec (cooling)
Lid temperature	25~110°C
State notice (LED)	Blue: normal operation Red: Failure Green: Waiting

Intuitive GUI



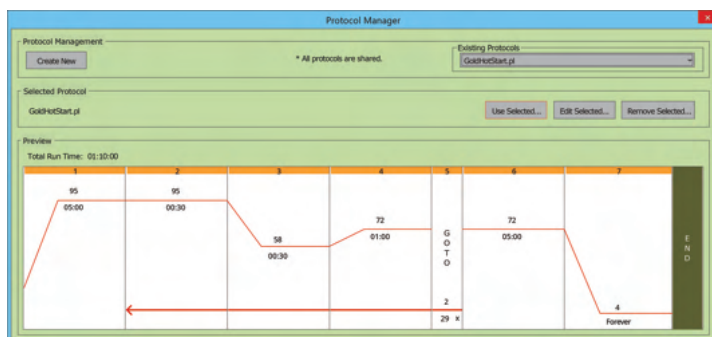
Connecting Screen

Up to eight **DuxCyclers** can be connected and operated on one operating system.



Status Screen

Enable real-time progress of each device.



Protocol Manager Screen

